

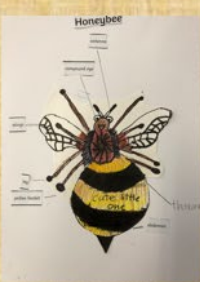


# NORTHMEAD

# NEWSBREAK



Stage 1 has been busy learning about living things



## ② Cricket

Batting, Bowling, keeping and fielding so much fun  
Cricket is competitive and is an amazing blast  
Pace, spin bowlings fun lets make a couple runs  
Its such an amazing sport and <sup>we</sup> run really fast

① The water fills and she starts to slowly drown  
She fights ~~ages~~ against the force and screams in dispare  
her hands go numb as she pulls a frown  
This girls slowly dying and nobody seems to care.

Title -> Pain

② The mountain as cold and freezing as ice  
The breeze cracks my lips, them turning stiff,  
Big gusts of wind, knock me down twice,  
Plans now trashed as I fall off the cliff.

## 5/6S Poetry

### Haiku Poems

- 1) Swaying in the wind, - Autumn  
There are brown and orange leaves  
Autumn is now here
- 2) Silently they creep - Lions  
They always hunt together  
crawling through the grass
- 3) Flapping its huge wings - Eagle  
and gliding through the thin air  
watching with sharp eyes

### Haiku poems nature

big blue vast Ocean,  
a large dangerous death trap,  
i saw a big orca.

## 2) Ladybugs

Ladybugs, red and spotty,  
hiding in the grass and leaves,  
flying into the air. ☺

## 3) Seaweed

Seaweed dangling,  
down below the deep blue sea.  
wrapped around all plants ☺☺

We have been looking  
at Haiku and Cinquain  
poems.

We also tried our hand  
at poems with multiple  
stanzas.

We hope you like them!

## Near a Snow Gum

Gently the tree sways in the wind  
The bark is many different colours and its light  
As the wind and snow quickly spinned  
Little birds ~~was~~ were slowly taking flight

The snow gently fell through the air  
A little creek flowed and rushed  
Two white rabbits ran quickly as a pair  
Now in the morning everything seemed to have hushed

## Grass

Grass can be very green.  
Mow it often week by week,  
Grass is soft nature

## Fish

Fish are slippery  
Fast and very slippery  
Live in the vast sea

## Trash Can

Trash cans very dirty  
It's full of rubbish and trash  
Emptied every week

## AT A GLANCE!

### 2021 DATES TERM 4

- ↗ Have you enrolled your child for Kindergarten 2022? On-line enrolments are being processed right now!
- ↗ Year 6 Photo YearBook Thurs 12 November (done by school) – full school uniform if possible
- ↗ OC TEST Wednesday 17 November – at school.
- ↗ P&C ZOOM Meeting Wednesday 17 November 7pm
- ↗ Intention to apply Selective HS 2023 closes 17 November (note sent to Y5 families 25/10). See note later in Newsletter Test: 10 March 2023
- ↗ **SCHOOL PHOTOS ARE ON!**  
Wednesday 24 November  
Advanced Life Photos will attend (Contractors are all fully vaccinated). Individual students and siblings. No class, large team/groups or mixing of year cohorts permitted.
- ↗ Last day Term 4 for students: Thurs 16/12
- ↗ Staff Dev. Day Fri 17/12
- ↗ 2023 – Term 1  
Staff return Fri Jan 28 – for 2 x Staff Dev Days (28 & 31 Jan)  
Year 1-6 return: Tuesday 1 February



## REMEMBRANCE DAY 2021

They shall grow not old as we who are left grow old  
 Age shall not weary them, nor the years condemn  
 At the going down of the sun and in the morning  
 We shall remember them. *Lest We Forget.*

### Dear Northmead P.S. Community:

Can you believe that already in this extraordinary year, we only have five more weeks together until Term 4 and the 2022 school year ends? And to our wonderful Year 6 students, what an important term this is who embark on the final weeks of primary schooling. Whether you've been at Northmead since Kindergarten, or arrived here later in your school life, we wish you wonderful, exhilarating, informative and joy-filled experiences for the remainder of Term 4. Cherish each day's memories including the special Year 6 events you'll be involved with. I know 2021 will be a year few of us will ever forget, however I encourage you to remember all the positive memories of your primary schooling as you move into High School and the life that awaits you in your future. I still remember the names of each of my teachers from Kindergarten to Year 6 and see their faces so clearly. They started me on a road of learning, avid reading and always to be curious about knowledge and the world around me. I wonder what your fondest memories of Kindergarten to Year 6 will be?

Thank you to all our families for your ongoing support and cooperation as we navigate the roadmap in Term 4, following COVID-safe operations from Education NSW. We realise that it can be frustrating and even puzzling when school guidelines are not exactly the same as Community/Public Health guidelines. However, we must keep in mind that everything schools are required to do and uphold, is based on keeping our students, who are unvaccinated, safe. I will continue to keep our community continually updated with the latest Situation Reports provided by the Department of Education, including any significant changes. The latest change only announced late on 9 November, was that on our School Photo Day of 24 November, we can now have individual student and sibling photos. The individual student photos will be grouped by the company into "class cohorts". The photographers are not permitted to take photos of large or mixed-year-cohort groups (such as sporting teams).

### ARE YOU MOVING ELSEWHERE 2022? PLEASE LET US KNOW!

In order for us to be up-to-date for 2022 class planning, we ask that families with students in K-Y5 who already know they will not be returning in 2022 to inform the school by phone call or email as soon as possible. A form you can use that appears later in this Newsletter. Thank you to the families who have already contacted the school. n

*There is still much more left to experience and accomplish in our final weeks together, so please always bring your BEST SELF everyday at Northmead, to make the most of each and every exciting learning and life experiences still to discover, engage with and help us all grow as people and learners. Climb your ladder of learning every day to reach your potential.*

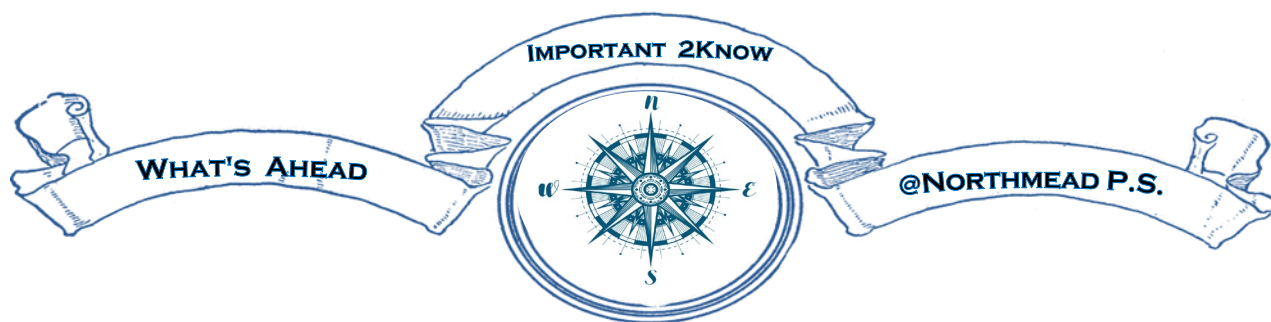
*"The rung of a ladder was never meant to rest upon, but only to hold (someone's) foot long enough to enable them to put the other somewhat higher."*

Thomas Henry Huxley  
C.S. Lewis

*I look forward to chatting with you in the next Northmead Newsbreak ...*

*...Anne Ezzy (Principal)*





## THE ROADMAP IN TERM 4 FROM 8 NOVEMBER

All NSW Public schools will operate on updated Level 3 settings for the rest of Term 4 2021, with the following activities allowed in a COVID-safe manner:

- Assemblies and presentations are allowed outdoors, with cohorts separated and physical distancing in place. **Fully vaccinated visitors (including parents and carers) are only allowed to attend if completing a specific role (such as presenting) and at the invitation of the school.**
- Dancing, bands, ensembles and music classes will be allowed within cohorts. **However, everyone must wear masks while playing instruments indoors. Other instruments that rely on breath or require a mask to be removed to be played, as well as singing and chanting, are not permitted in Term 4.**
- Excursions are allowed outdoors (and indoors where sole use of the premises is available).
- Incursions are allowed indoors and outdoors where cohorts are kept separate.
- Year 6 graduations and formals are allowed within cohorts, either on school sites or at external venues – with COVID-safe plans in place and physical distancing adhered to.
- Students in Year 6 who are not vaccinated and attend their formal at external venues must be accompanied by a fully vaccinated parent, who must remain at the venue, but cannot enter the function room where the formal is occurring.
- School sports are allowed, including inter-school sports (**after school hours**) and access to indoor and outdoor pools (from 1 November).
- Transitions and orientations are allowed in a COVID-safe way that minimises mingling between students and follows the school's organisation.

### School photos – Wednesday 24 November

School photos are allowed outdoors on school sites. Providers supporting school photos must be fully vaccinated and sign in using the school check-in app. Individual photos and sibling photos are permitted and as of 9 November. The individual student photos will be “collaged” by the photography company to make into class photos. No large groups, team photos or mixed-year-cohorts are permitted due to physical distancing requirements.

### Scripture (Special Religious Instruction...SRE/Ethics)

- Can recommence from 8 November if providers have volunteers who are fully vaccinated and classes are held without mixing of student cohorts;
- After contacting the coordinators of the providers for Northmead P.S. who received advice from their respective head offices, they will provide classes on Thursday 2 December in order to wish students well for the year ahead and say farewell to Year 6.

## THE ROADMAP IN TERM 4 FROM 8 NOVEMBER [CONTINUED]

### Student attendance at school

- All students are expected to be at school unless they are unwell. Do not attend school if unwell, even with mild symptoms. Get tested for COVID-19 and follow NSW Health directions. Find your local [testing clinics External link](#).
- If you have any COVID-19 symptoms you will be sent home and must not return to school unless you have either:
  - isolated for 10 days, when no medical certificate is available
  - a negative COVID-19 test result and are symptom free.
- In circumstances where a student has other medical reasons for recurrent symptoms, a letter from your GP is sufficient to negate the requirement for a negative test.
- Self-isolation periods and testing requirements differ for close contacts based on their exposure and vaccination status. If you are identified as a close contact, an authorised contact tracer from NSW Health or from the department's Health and Safety Directorate will contact you and let you what you need to do. For more information, refer to the [NSW Health fact sheet on close contacts External link](#).

### Parents and carers on site to support school operations

- Fully vaccinated parents and carers will be allowed on-site to support curriculum delivery, student wellbeing activities and school operations (for example, canteens and uniform shops – with adherence to COVID square metre requirements for the space being used).
- **Parents and carers must check in using the school check-in, show proof of vaccination on entry to the school site and follow mask-wearing requirements.**
- As it is late in Term 4, activities such as reading groups with parent helpers, **will not resume until 2022.**

Thank you again for your continued support during this final school term for 2022.

*On behalf of the N.P.S. staff, please continue to stay safe and well*

*With kind regards ... Mrs Anne Ezzzy | Principal*

# Northmead Public School

SCHOOL PHOTOGRAPHS WILL BE TAKEN ON:

**Wednesday 24 November 2021**

**ORDER NOW go to [www.advancedlife.com.au](http://www.advancedlife.com.au) and enter the code  
LNL FC7 MJW**

Dear Parents,

School photographs are scheduled to be taken by *advancedlife*. Whilst an envelope and flyer will be distributed shortly, if possible it is our preference that ordering be completed online to reduce administration and potential security issues related to the return of cash and envelopes on photo day.

Orders for packages and sibling photographs can be placed securely online at [www.advancedlife.com.au](http://www.advancedlife.com.au) using our school's unique **9 digit advancedorder code**. Portrait and group package orders are due by photography day.

Should you wish to purchase a sibling photograph online, the order must be placed no later than the day before photography day. Sibling photographs will only be taken if an order has been placed.

Should you have any queries concerning school photographs or online ordering, please contact us at [www.advancedlife.com.au/contact](http://www.advancedlife.com.au/contact)



## THE ABOVE AND BEYOND PRINCIPAL'S AWARD

N.P.S. recognises the above and beyond efforts of ...



### Your Child

Ms Anne Eddy | PRINCIPAL | September 2021



### KINDERGARTEN – STAGE 1 (YEARS 1 AND 2)

| CLASS | WEEK 4     | CLASS | WEEK 4      | CLASS | WEEK 4         |
|-------|------------|-------|-------------|-------|----------------|
| KC    | Henry T.   | 1C    | Isaac H.    | 1/2M  | Isaac M.       |
| KC    | Safia S.   | 1C    | Addison F.  | 1/2M  | Maya F.        |
| KL    | Arlo D.    | 1D    | Oliver W.   | 2C    | Selene S.      |
| KL    | Milana K.  | 1D    | Liam W.     | 2C    | Lola T.        |
| KMB   | Amaira G.  | 1F    | Zehra H.    | 2H    | Fergus L.      |
| KMB   | Tatiana V. | 1F    | Jimmy M.    | 2H    | Victoria K.    |
| KS    | Oscar M.   | 1G    | Sophie B.   | 2K    | Mirror D.      |
| KS    | Amelia C.  | 1G    | Malakai N.  | 2K    | Mirha H.       |
|       |            | 1/2JL | Toola F.    | 2P    | Zack A.        |
|       |            | 1/2JL | Nicholas B. | 2P    | Christopher M. |

### STAGE 2 (YEARS 3 AND 4) – STAGE 3 (YEARS 5 AND 6)

| CLASS | WEEK 4         | CLASS | WEEK 4    | CLASS | WEEK 4        |
|-------|----------------|-------|-----------|-------|---------------|
| 3/4A  | Adrian A.      | 3/4M  | Max P.    | 5/6M  | Jayden C.     |
| 3/4A  | Sophia H.      | 3/4M  | Ario N.   | 5/6M  | Ryan A.       |
| 3/4C  | Aryannah McK.  | 3/4P  | Meri B.   | 5/6N  | Isabelle N-H. |
| 3/4C  | Shilan M.      | 3/4P  | Joshua B. | 5/6N  | Lily G.       |
| 3/4F  | James C.       | 4/5F  | Dawn K.   | 5/6S  | Ariana C.     |
| 3/4F  | Rafael F.      | 4/5F  | Jayne T.  | 5/6S  | Gisela R.     |
| 3/4K  | Tara K.        | 5/6E  | Aamon L.  | 5/6W  | Anna J.       |
| 3/4K  | Ploypailene M. | 5/6E  | Henry K.  | 5/6W  | Leon O.       |
| 3/4L  | Alana O.       | 5/6H  | Ruby J.   |       |               |
| 3/4L  | Samar S.       | 5/6H  | Tamsin B. |       |               |



# Congratulations!

Congratulations to Jessica L from 5/6S who has been invited to play as part of an International Touring Squad, touring England and France, in January 2023.

Jessica plays in the Senior Girls PSSA team and has gone onto represent Northmead P.S in the CHPSSA and Sydney West Football teams.

We are so excited for you, well done Jess!

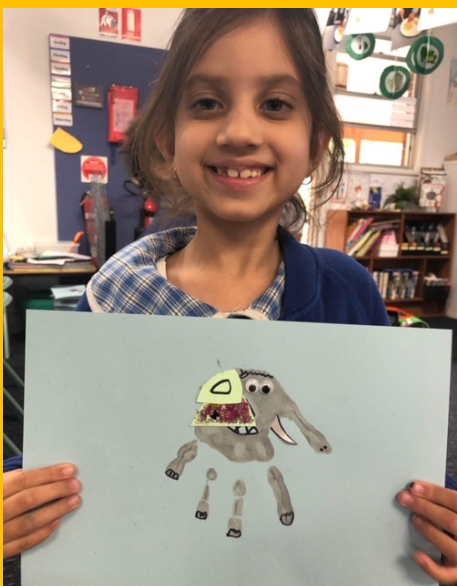


*"I am really excited to be able to have this opportunity. I am very happy to go on this trip! I really love soccer and I am so excited to go to Paris, France and England to play soccer. This is a once in a lifetime opportunity and I can't believe I get to do it."*

# Diwali Celebrations At Northmead Public School

The Indian Festival of Lights, is the most widely celebrated festival of the people from the Indian sub-continent and across the whole world. Deepavali means rows of lights, it is the festival symbolising victory of good over evil, light over darkness, and knowledge over ignorance. Though there are many mythological explanations to this wonderful festival, however, in the current world what the festival of lights really stands for is a reaffirmation of hope, a renewed commitment to friendship, religious tolerance, spreading the word of peace and harmony and above all, celebration of "simple joys of life".





# Community Connection Groups

At NPS we are connecting families with similar language backgrounds using WhatsApp.

If you have a language background of Farsi, Dari, Arabic or Urdu and you would like to join one of these groups please email Mrs Melanie Fletcher at: [melanie.fletcher9@det.nsw.edu.au](mailto:melanie.fletcher9@det.nsw.edu.au)



If you have a language background that originated in India & you are interested in being the school contact for the Whatsapp group please email Mrs Fletcher



## Northmead Public School Band News



Any child in Year 3 or above in 2022 may apply to join next year's **Training Band**. No prior music experience is required. Notes have been sent out with Year 2 students with further details. Our bands consist of the following instruments:



The **flute** is a quiet and sweet sounding instrument. Students with smaller lips and competent fine motor skills suit the flute. Contrary to popular belief, the flute requires similar air capacity to that of the tuba.



**Clarinets** have a large range, their lowest notes being lower than the saxophone and their highest notes almost reaching the highest note of a flute. Clarinets require considerable fine motor skills but slightly smaller air capacity than the flute. Their sound, created by airflow and a vibrating reed, is rich and sonorous.



The **saxophone** was developed from the clarinet and they share many similarities. The player blows into a reed fitted into the mouthpiece of the instrument. The saxophone can produce a mellow or strong sound. It is suitable for all students, but is difficult to play if they are small.



The **trumpet** is the playground of the energetic and exuberant. It can be a sweet melodious or an edgy/punchy sounding instrument, making it one of the most versatile instruments in the band. Students must have the ability to produce a 'buzz' and good 'tummy power'.



The **euphonium** has a sound similar to that of the French horn. It has the versatility to play fast and furious melodic passages as well as a low enough range to form part of the bass line. Its mouthpiece is large, producing a large, rich and warm sound, and making it easy to play.



The **trombone** is the only instrument that uses a slide system to change its pitch. Students need to have good listening skills. Like the trumpet, the trombone is incredibly versatile, and is the only instrument that can produce a 'glissando' and a very cool car racing noise.



Percussionists are required to juggle up to 30 different instruments, each with their own unique technical requirements, including the **drum kit, timpani, glockenspiel**, cymbal, maraca, gong, bass drum, bongo, conga and wind chimes. Percussionists need to have excellent coordination and most importantly, a very steady sense of beat. Students need to be dedicated and organised, as percussion requires constant flexibility and multi-tasking.



A **bass guitar** is a string instrument which is related to the electric guitar. The bass guitar produces lower sounds, is usually larger in size and length, and also heavier than regular guitars. The size and weight of this instrument, as well as how your child's hands fit around the neck of the instrument is important to consider when choosing the bass guitar.

### Contacting band

For further information the band committee can be contacted at [npsband@hotmail.com](mailto:npsband@hotmail.com)



# Discover NextSense Preschools at North Rocks

Our preschools are suitable for **all** children aged 3 to 5 years old, inclusive of children with hearing or vision loss.

For more information or to enrol:

 1300 581 391

 [hello@nextsense.org.au](mailto:hello@nextsense.org.au)



Enrolments for  
2022 at our  
preschools are  
**now open.**

 **Next  
Sense**

Advancing 160 years of RIDBC experience.

NextSense is the registered business name of Royal  
Institute for Deaf and Blind Children (ABN 53 443 272 865)