

Return to school Level 3 plus

Information current as at 7 October 2021

Developed in partnership with NSW Health



Acknowledgement of Country



I acknowledge that I am hosting this parent information session from the lands of the Darug nation in the Hawkesbury area. I also acknowledge the Ongoing Custodians of the various lands on which you are all joining from today, including the Burramattagal people of the Darug nation upon whose lands, Northmead Public School stands and I extend my respect to Aboriginal and Torres Strait Islander people participating in this meeting as well as all 1st Nations' people throughout our school community.

What we'll cover in this session

Term 4 return to school



- Key dates
- COVID-safe practices at our school
- Vaccinations
- School Activities on hold
- Orientations/Transitions
- Where to find out more
- Questions and answers
(please put any questions into the Chat and we will attempt to answer these at the end of the session).

What you need to know about our return to school in Term 4

We're excited about our return to face-to-face learning and welcoming students and staff back onsite where we know the best learning happens.

We are taking a layered-approach to ensuring our school is safe for our staff and students and following NSW Department of Education COVID-safe school operations

The department's guidance for all NSW public schools was developed with NSW Health and is evidence-based to give us multiple layers of protection.

COVID-safe operations for schools

Department preschools, Kindergarten & Year 1	All other years	
18 October	25 October	
		
		

Key dates for our staged return

It's important that we stick to the staged return to give us time to be ready to welcome back students onsite.

Students will return to face-to-face learning in the following order:

- from 18 October –Kindergarten and Year 1
- from 25 October – all remaining year groups (Years 2, 3, 4, 5, and 6)



Primary school students return

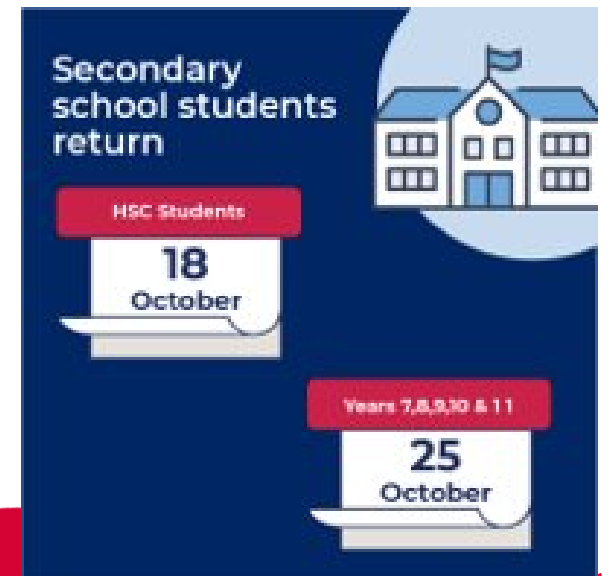
Department preschools, Kindergarten & Year 1

18
October

Years 2, 3, 4, 5 & 6

25
October

The graphic features a dark blue background with a white school building icon in the top right. Two white calendar-style date cards are shown, one for 18 October and one for 25 October, with red banners above them indicating the corresponding year groups.



Secondary school students return

HSC Students

18
October

Years 7, 8, 9, 10 & 11

25
October

The graphic features a dark blue background with a white school building icon in the top right. Two white calendar-style date cards are shown, one for 18 October and one for 25 October, with red banners above them indicating the corresponding year groups.

Vaccinations

COVID-19 vaccination is the best protection against severe illness and also reduces the risk of spreading it to others.

All staff required on site supporting the return to school will need to be fully vaccinated from 18 October.

Then from 8 November all staff, contractors, volunteers and students on student placement on a school site will need to be fully vaccinated, including Outside of School Hours Care staff.



Keeping student groups together

As we return to school students will be kept in their cohorts to minimise opportunities for transmission of COVID-19 and to enable effective contact tracing and containment.

This means minimising interaction between students on school grounds and keeping cohorts together where possible.

This means separate play areas at recess and lunch, minimal interaction with teachers outside their year cohort and different exit gates for the afternoon pick-up.

- Kindergarten will finish at 2:45pm and exit via the Kleins Road gate.
- Year 1 will finish at 3pm and exit via the Kleins Road gate.
- Students leaving with older siblings can meet them at 2:50pm outside Block C and may leave via the NOOSH gate or Moss Street.
- Year 2, 5 and 6 will leave via the Bus Gate.
- Years 3 and 4 will leave via Moxhams Road Gate.
- Parents are encouraged to drop-off and pick-up their children a little distance from the school gates to minimise mingling and maintain social distancing.



Mask wearing for students and staff



Masks

Masks will be required for all staff and all students

in Year 7 and above while they are indoors and outdoors on school sites unless eating or exercising. Masks are strongly recommended for primary students both indoors and outdoors unless eating or exercising.

Students should bring their own masks where possible, but schools will have back-up supplies just in case. Masks are also required for all travel on public transport for children 13 years and older.

Masks are required to be worn on school site by staff indoors and outdoors and is strongly recommended for students indoors and outdoors unless exercising or eating.

Mask supplies will be available in every classroom.

Fitting a mask on a younger child

Please send your child with a mask and a spare in their bag. We'll have some on site too.

We have a graphic from NSW Health on how to fit a mask properly – please have this conversation with your child.

While masks are not required in the Public Health Order for our primary students they are strongly recommended by NSW Health and the department has taken the decision that they are required as an important layer of protection for our staff – particularly while younger students are not yet vaccinated.

There are some exemptions around mask wearing – eating and exercising being the key times. Please have a look at the NSW Government website for the full list of exemptions. <https://www.nsw.gov.au/covid-19/rules/changes/face-mask-rules>

Tips on wearing a mask

NSW GOVERNMENT

Children can wear small cloth or surgical masks when leaving home, including going to school

You can remove your mask when eating or exercising

Try not to touch your face while wearing your mask

Use a clean mask every day. Do not reuse single-use masks

Wash and dry reusable masks after use and store in a clean, dry place

Wash or sanitise your hands before putting on or taking off your mask

Fitting a mask to younger children

How to wear a mask 

How to wear a mask 

How to wear a mask 

How to wear a mask 

-  

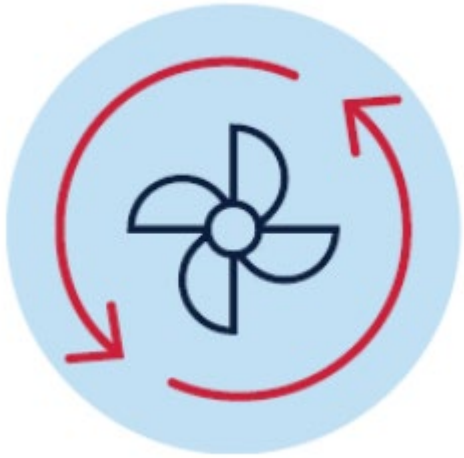
1 Ensure the mask covers your nose and mouth and fits snugly under your chin, over the bridge of your nose and against the sides of your face
-  

2 Make sure the ear loops are firmly in place
-  

3 Fold the metal strip in the mask around your nose so it stays in place
-  

4 Try not to touch your face while wearing your mask

Ventilation



Having open or well-ventilated spaces reduces the risk of transmission of COVID-19 because infectious particles are more quickly diffused in the open air.

The school has been audited and a small number of windows will need to be repaired.

Staff are encouraged to take regular breaks with students outdoors and also provide outdoor learning opportunities.

Windows and doors will be opened.

All schools are awaiting further advice around the Department's intention to procure air purifiers.

School activities

During Term 4 many school-based activities will remain on hold until NSW Health advise otherwise.

This includes large celebrations like assemblies, presentation days and graduations, arts and sports events. If NSW Health advice changes, then we will let you know about changes as soon as possible.

The school has booked a videographer to record end-of-year presentations.

The school will also undertake class group photos, year groups including Year 6, special groups (such as the Captains, Vice Captains and Prefects) and extra-curricular groups. Notes will be sent home to advise parents of intended photo days.

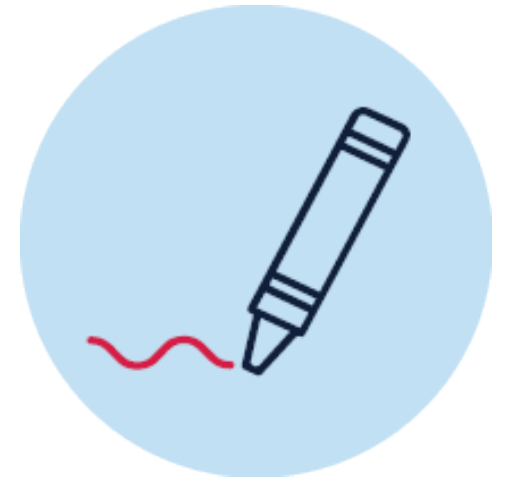


Orientation and transition to school

Onsite orientations and transition programs are not currently allowed in person on school sites until we are advised differently by NSW Health.

We'll share more information in the coming weeks about our school's virtual orientation and transition program including any information from the relevant High Schools.

2022 Kindergarten Parent Information Evening will be held next Tuesday 19 October at 6:30pm. Parents have been emailed the ZOOM link.



Outside of school hours care



Outside of school hours care, vacation care settings on school sites will follow the same COVID-safe guidelines as public schools including the requirement to be fully vaccinated from 8 November.

Our NOOSH provider will advise parents of COVID-safe drop-off and pick-up arrangements including their QR code.

Further information and questions

All of our students are expected to be back at school for their staggered return dates. After this date we will only be supporting learning from home where this is required by NSW Health to do so.

Parents and students will be notified if a decision is made to close the school due to a confirmed case of COVID-19. During this time we will continue to provide learning from home activities and we will let you know when we can return to face-to-face learning. In this instance, you will be notified by SchoolBytes, Skoolbag and directed to the school's website. We also have both a NPS Facebook and Instagram pages where this information can be posted.

Find updated information on the department's Advice for families page to support students who are anxious about the return to school – or get in touch with us directly.

<https://education.nsw.gov.au/covid-19/advice-for-families>

Thank you

We will now look at the Chat questions.

If you would like to ask a question you can also use the “hand-up” emoji.