

COVID-safe operations for schools

Students return to face-to-face learning in staged cohorts. COVID-safe operations are maintained through high rates of staff and student vaccination, safe rostering and physical distancing.

Department Preschools,
Kindergarten & Year 1

18
October

All other years

25
October

From 18 October, students sitting their HSC exams will be able to access their schools full-time for revision and study sessions.

Students should be at school from the date indicated for their year group unless they are unwell.

Drop-offs and pick-ups

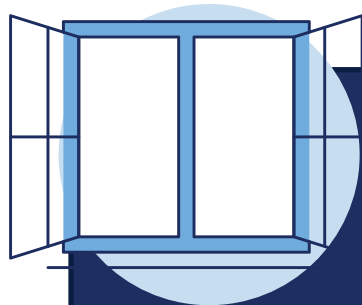


Drop-offs and pick-ups will be by staggered groups and all entrances and exits will be used to start and finish school days.

Please follow the physical distancing rules, avoid gathering outside gates, remain off school grounds and wear a mask. (some exceptions made for vulnerable students.)

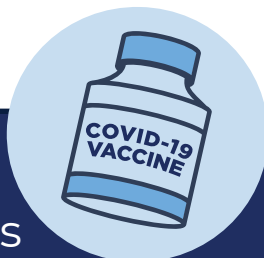
Try to stay in the car. This does not apply to (OOSHC). Sign-in procedures are required.

Ventilation



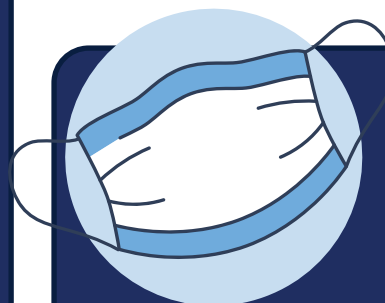
Open or well-ventilated spaces reduce the risk of transmission of COVID-19 because infectious particles are more quickly diffused in the open air than in spaces with less ventilation. Outdoor settings will be used where practicable.

Vaccination



All adults on school sites must be fully vaccinated against COVID-19, including employees, contractors, volunteers and essential visitors. Students aged 12 or above are now eligible for a COVID-19 vaccination. Parents and carers can book in a Pfizer or Moderna vaccine now.

Masks



Masks will be required for all staff and all students in Year 7 and above while they are indoors and outdoors on school sites unless eating or exercising. Masks are strongly recommended for primary students both indoors and outdoors unless eating or exercising. Students should bring their own masks where possible, but schools will have back-up supplies just in case. Masks are also required for all travel on public transport for children 13 years and older.

Visitors



Only essential visitors are allowed on school sites. All visitors are required to wear a mask and sign-in using the Service NSW QR code when entering the school.

Hand hygiene & cleaning



Students will be reminded to wash their hands often. Sanitisers, soaps, paper towels and other essential items will be readily available for students. Enhanced cleaning will continue on our school site.

HELPFUL TIPS FOR COMING BACK TO PRIMARY SCHOOL

Your teacher is looking forward to seeing you and we know that you are looking forward to seeing your friends.

Sometimes learning from home felt easy, sometimes it felt a bit hard. Everyone has a different learning from home story to tell. Here's some helpful tips for you as you get ready to return to school.



GET READY

Check your uniform and shoes still fit, and repack your school bag. Your school will have hand sanitiser and masks, but you can take your own too!



BE SAFE

Safety first – wear your mask. Sneeze or cough into your elbow, put used tissues in the bin, and wash your hands during the day and before you eat.



BE KIND AND PATIENT

Everyone will settle back to school in a different way. Showing kindness and being patient with the people around you will help everyone feel better.



SCHOOL WORK

Try your best. Let a teacher, parent or a carer know what you found easy or hard when working from home. They are there to help you.



FEELINGS

It can help to talk. It's ok to feel a little unsure, worried, nervous, happy, angry or any feeling in between. Talking to your parent or a carer, your teacher or other staff is important when you feel unsettled or are worried about a friend.



HAVE SOME FUN

Your teacher wants you to enjoy being back at school. Join in the classroom and break-time fun, and play outside with your friends and classmates.



EAT

Food is fuel for your body and brain. Don't forget to eat breakfast and grab a healthy lunch and keep your water bottle topped up!



SLEEP

Nothing beats a good sleep. Go to bed early and keep phones and other devices in another room, so you're not disturbed. It might take a little time to get back into your routine.



| NSW Department of Education

Roadmap for parents and carers Return to school for Level 3 plus

Information current as at 7 October 2021.
Developed in partnership with NSW Health

education.nsw.gov.au/covid-19/advice-for-families



In Term 4, schools will return to face-to-face learning either through a 'staged return' or 'full return'.

The best learning environment for students is in the classroom and we are looking forward to welcoming back our staff and students in Term 4. We know that while there will be excitement, there will also be some anxiety and uncertainty about being back together at school.

Recent evidence shows that very little COVID transmission happens between children in school settings, and only a very small number of children who contract COVID-19 get seriously ill. However, to support school safety we are requiring all staff on site to be fully vaccinated, and we are strongly encouraging our students and school community to do the same.

We have worked with NSW Health on our COVID-safe plan to return to school sites and have developed effective practices to support this, including staff vaccinations, mask wearing, reduced mingling of staff and student groups, ventilation in classrooms and continued good hygiene and cleaning. We are confident that this, in combination with support from our school community, will minimise risk and help to keep schools open and students learning face-to-face next to their peers.

How the staged return to school will work

Students will return to face-to-face learning at school in the following order:

- from 18 October – department preschool, Kindergarten, Year 1
- from 25 October – all remaining year groups.

To maximise the re-establishment of a consistent routine, students who attend schools for Specific Purposes (SSPs) are recommended to return at the same time as students in mainstream settings. Students with disabilities in mainstream classes or support classes can also return as part of the staggered return at the same time as their year groups.

Students completing their HSC can already return in a limited way and this will continue for the first two weeks of Term 4. From 18 October, these students will have full-time access to school campuses and their teachers.

Some schools may have slightly different return to school plans, particularly if they have stage based classes or are very small schools.



School attendance

All students should be at school on the date indicated for their year group, unless:

- they have a medical certificate which says they can't return to school due to a condition or illness
- they are currently unwell
- they have been asked by NSW Health to self-isolate.



Wellbeing

If you are worried that the impacts of COVID-19 or going back to face-to-face learning may be affecting your child's wellbeing, please discuss this with your child's teacher.

You can find more information to help your child's wellbeing through the mental health and wellbeing resources on the department's website.



Break times, drop-offs and pick-ups and canteens

To make sure students reduce the risk of transmission across cohorts, schools will put in place staggered recess and lunch breaks, start and finish times and drop-off and pick-up points.

Students can use the canteen during breaks. This will be different at each school depending on the size of the school, the number of students, traffic flow and other factors.

Creating a safe learning environment



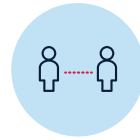
Masks and face coverings

Masks will be mandatory for all staff and all students in Year 7 and above while they are indoors and outdoors on school sites unless eating or exercising. Masks are strongly recommended for primary students both indoors and outdoors unless eating or exercising.



Students should bring their own masks where possible, but schools will have back-up supplies just in case.

Masks are mandatory for all travel on public transport for children 13 years and older.



Physical distancing

All adults must keep 1.5 metres distance from each other, including teachers and support staff, and parents and carers waiting to collect children.

Physical distancing between children in the same class is not required under the latest health guidelines. Mixing between class groups will be minimised and students will be supported to follow strict hygiene practices like:

- regularly washing hands
- not sharing drinks or food
- coughing or sneezing into their elbow, or else using a tissue which should be put in the bin straight away
- filling water bottles from bubblers rather than using the bubbler directly.



Vaccination

All adults at school sites, including employees, contractors, volunteers and essential visitors, must be fully vaccinated against COVID-19 by 8 November 2021. Adults that are required to support the staged return to school in October 2021 will be required to have received two doses of COVID-19 vaccine by that date. For schools under Level 3 settings, adults are strongly encouraged to have had two doses of a COVID-19 vaccine, but are not required to be fully vaccinated until 8 November.

Students aged 12 or above are now eligible for a COVID-19 vaccination. Parents and carers can book in a Pfizer or Moderna vaccine now.

Vaccination appointments are available at more than 3,000 locations across NSW, including GPs and pharmacies. For students and families who have questions or concerns related to getting vaccinated, refer to [NSW Health's Know the facts COVID-19 vaccination fact sheet](#).



School cleaning and hygiene supplies

Schools will continue to receive additional cleaning in line with advice from NSW Health.

Schools have received extra supplies of soap, hand sanitiser, toilet paper, paper towels, disinfectant wipes and personal protective equipment and can order more as needed.



School activities

Many school-based activities will remain on hold, including large celebrations such as presentation days and graduations, arts and sports events. For a full list of what is permitted and what is on hold, refer to education.nsw.gov.au/covid-19/advice-for-families.



Visitors

Only essential visitors are allowed on school sites at this time. When dropping off or picking up your child, parents and carers need to stay outside school grounds, you will need to wear a mask and physically distance. Some exceptions may exist for:

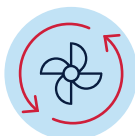
- schools for specific purposes
- vulnerable students
- students with disability
- preschools.

In these instances, follow the vaccination and mask-wearing requirements and sign in using the Service NSW QR code when entering the school.



Reporting and assessment

You will receive your child's Semester 2 report by the end of the year. This will be a simplified version of the report you normally receive.



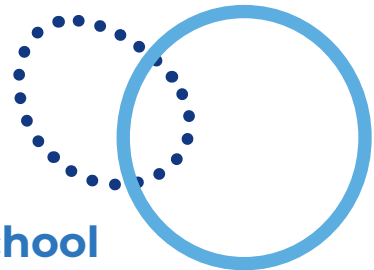
Ventilation

Open or well-ventilated spaces reduce the risk of COVID-19. Where possible classroom doors and windows will remain open and fans and air-conditioners will be set to use outside air, where possible.



Rapid antigen testing

We are exploring with NSW Health the use of COVID home testing kits (known as rapid antigen testing) as a further screening measure to reduce the risk of outbreaks in schools, or the length of time students need to isolate after contact with someone with COVID. Further details will be provided in Term 4.



Orientation and transition to school

We have flexible arrangements so that students and parents and carers can still get help with orientation and transition to school in a COVID-safe way. Kindergarten and Year 7 orientation programs will be possible for schools that are no longer under stay-at-home rules. Transition and orientation programs will be virtual for schools still under stay-at-home rules.



Responding to COVID-19 cases

Where there is a case of COVID-19 in the school community, the department has established systems and protocols with NSW Health to manage and respond accordingly to keep our staff and students safe. These protocols include communication with parents or carers if their child has been in contact with someone who has tested positive to COVID-19 while at school or if the school becomes closed.



If your school reverts to learning from home

If schools revert to learning from home due to a Public Health Order or direction from NSW Health or the Department, the school will continue to provide learning activities for your child to do at home and will communicate with you about their learning.

If your child's school needs to revert to remote learning, your school will let families know through the usual channels, which might include email, social media or the school website.



If your school becomes closed due to a COVID-19 case

Parents and students will be notified when a decision is made to make the school closed for onsite attendance due to a confirmed case of COVID-19 or other events that require the school to close. Information about the operational status of the school will be distributed through the school's information channels, including the school website, Schools Safety App, any school social media channels and the department's website. During this period, the school will continue to provide learning activities for your child to do at home and will communicate with you about their learning. Parents and students will be informed by the department when the school is ready to resume onsite learning.



Get in touch with questions or concerns

Your principal has already started planning for a COVID-safe return at your school, taking into account the unique needs of their students and school. To support this planning, and to allow for your teachers to be fully vaccinated by 8 November or earlier, it is important that students return on the date specified for their year group.

Get in contact with your principal directly if you would like more information about your school's COVID-safe return to school plan or if you have concerns or questions about your child being back in their classroom for face-to-face learning in Term 4.

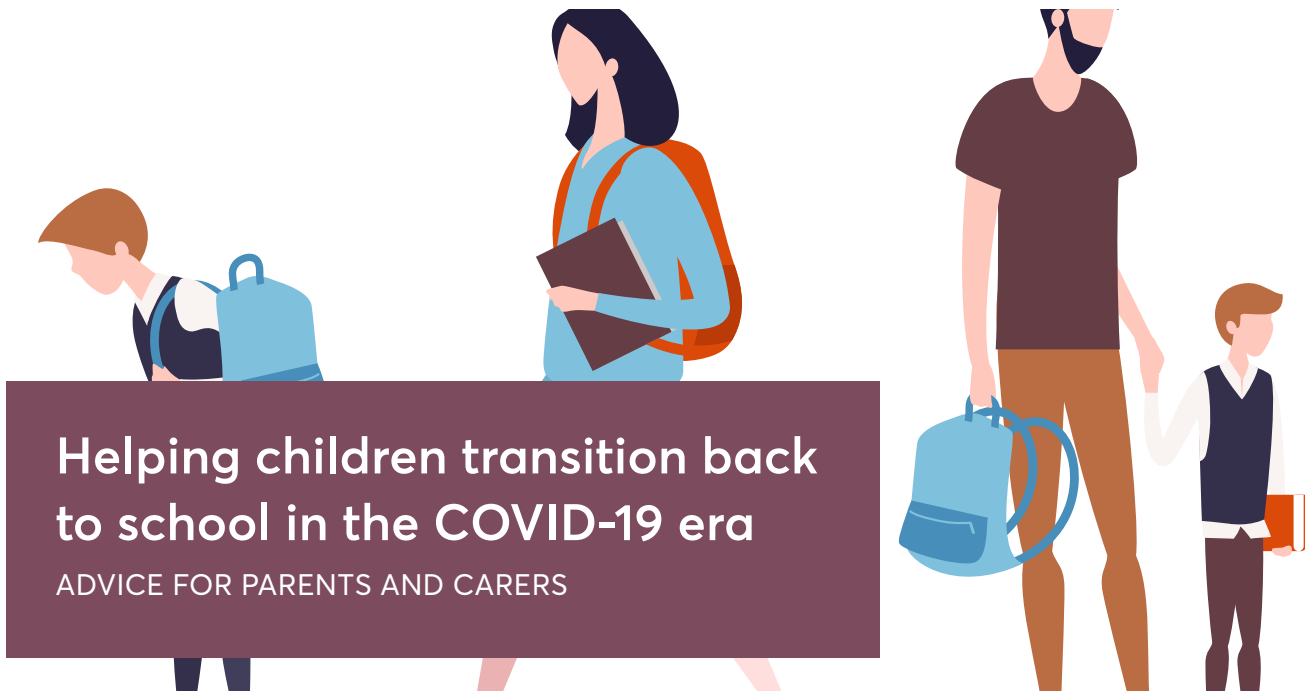
If you need further information, please call your school. If you need an interpreter to assist you with your enquiry, please call the Telephone Interpreter Service on 131 450 and ask for an interpreter in your language. You will not be charged for this service.

Say hello

-  @NSWDepartmentofEducation
 -  @NSWEducation
 -  @NSWEducation
- education.nsw.gov.au

© 2020 NSW Department of Education
GPO Box 33 Sydney NSW 2001 Australia
T 1300 679 332





Helping children transition back to school in the COVID-19 era

ADVICE FOR PARENTS AND CARERS

Transitioning back to school in the COVID-19 era can present many challenges for parents and children. Many parents have reported that learning from home has given their child the opportunity to work at their own pace. Many children have also benefitted from the 1:1 support which has helped with learning.

The shorter school day and flexibility for rest breaks has also meant that fatigue has been less of an issue. In addition, anxiety has improved for some children as a result of these factors. Given this, it is no wonder that returning to school comes with a mix of relief and excitement along with a new set of stresses for children and parents.

Reassure your child that it is safe to go to school

Many parents had conversations with their children about the importance of learning from home to keep them healthy and safe. Some children may now worry about the safety of returning to school.

To help your child feel safe, have a conversation with them explaining that:

- the decision to return to school is based on medical advice
- children do not usually get sick from COVID-19
- everyone at school is working hard to make sure that children are safe
- anyone who is unwell will stay at home
- the government is keeping an eye on things – if it starts to be unsafe, decisions about what to do will be made
- reassure your child that it is normal to have mixed emotions such as excitement, relief, worry and anger
- discuss what they are looking forward to and what they are worrying about
- reinforce good hygiene practices.

After school, it will be important to:

- talk to your child about their day, including what they enjoyed, what they felt worried about and what they are looking forward to tomorrow
- schedule extra family time as your child is likely to have missed being at home with you
- your child may feel more fatigued and will benefit from quiet activities to recharge.

Prepare your child for changes to usual school processes

Your school may have made changes to their normal processes. Your school will communicate these changes with you – these may vary across schools. To help prepare your child:

- talk to your child about upcoming changes - the more they understand the changes, the more comfortable they are likely to feel about them
- write social stories with your child about changes to routine
- ask to have an extra online 1:1 session between the teacher and/or learning support worker and your child before going back to school
- see if there are any strategies that home learning enabled that you might be able to take to the classroom
- ask your child what will make their transition back to school easier and see if this can be accommodated by your child's teacher, for example, knowing the class seating plan or the first activity of the day may help.

Re-establish normal routines in the lead up to school

- **The week before:** Return children to their usual wake up and bedtime routines, as well as breakfast and morning snack/lunch.
- **The day before:** Involve your child in packing their bag and preparing their uniform - this leaves you plenty of time to notice if anything is forgotten.
- **The morning of:** Allow more time than usual to get ready.

Some schools may not allow parents to walk children to their classroom. This may make it harder for some children to separate from parents. Prepare your child for this by:

- discussing what might be different about the drop off and pick up procedures and how you will manage it as a family
- talk through the new procedure and role play or write social stories
- reassure your child that there will be plenty of staff to help take them to their classrooms
- ask your child if there is anything that will make this easier for them, such as arriving to school with a buddy or taking a special item that helps them feel 'brave'.

Returning to school before siblings

Younger children returning to school earlier than other family members may feel disappointed that their siblings are continuing with home learning or may feel disconnected from the family. You can help your child by:

- reassuring them that is ok to feel disappointed
- explaining that all children will be returning to school soon
- allowing your child to pick a fun activity to complete when they get home from school so that they have something to look forward to
- avoid scheduling any 'fun' activities with other family members or friends whilst your child is at school.

Tips for children with cognitive and behavioural challenges

As children adjust to the new routine, cognitive and/or behavioural difficulties may seem more challenging. The following strategies can help children with an acquired brain injury (ABI) or other neurodevelopmental difficulties to avoid these issues as they transition back to school

- Fatigue may be more problematic for these children either as a direct consequence of their difficulties or due to the extra effort it takes for them to readjust to change. Consider slowly increasing your child's attendance at school to help combat fatigue – you may consider shorter days or rest days.
- Speak to the school about incorporating more rest breaks throughout the day for your child.
- Speak to your school about reducing or eliminating homework until your child has settled back into a routine.

- Ensure that your child is linked in with the learning support and wellbeing team.
- Educate staff who are either new or unfamiliar with your child about their brain injury or neurodevelopmental disorder – For example, ABI is often the ‘invisible’ injury and those working with your child should be made aware of their needs, as well as strengths and weaknesses.
- As children readjust to the pleasures and challenges associated with school, they may show greater difficulties with emotional regulation and challenging behaviour – remember, this is likely to be part of the readjustment phase and should improve with time.
- Your child may need your help to regulate. You may find it helpful to create a calm corner with a ‘tool box’ of calming and distracting items, as well as adding some relaxation strategies into the daily routine. Exercise can also assist.

Finding extra support

If you need extra support or clarity in regards to your child’s needs and learning challenges, referral to an appropriate psychologist for a detailed assessment and advice may be warranted. For example, a paediatric neuropsychologist can provide a differential diagnosis and strategies, and direct you to an appropriate special education tutor or any other healthcare specialist that may be required.

There are number of ways to access a psychologist.

You can:

- use the Australia-wide Find a Psychologist™ service. Go to findapsychologist.org.au or call 1800 333 497
- ask your GP or another health professional to refer you.

Acknowledgments

This resource was prepared by the:



A clinical neuropsychologist is a psychologist who is trained to understand brain-behaviour relationships (across the lifespan):

- To assess thinking/brain abilities and difficulties to clarify diagnosis and identify the client’s care needs and priorities
- To provide targeted intervention or rehabilitation for people with thinking/brain-related difficulties or disorders
- To adapt or modify treatments to take into account the effects of thinking/brain difficulties




The Australian Psychological Society Limited
PO Box 38, Flinders Lane, VIC, 8009

Telephone: (03) 8662 3300 or 1800 333 497

Fax: (03) 9663 6177

Email: membership@psychology.org.au

Web: psychology.org.au

Find us on social media   

ABN 23 000 543 788 © 2020

The APS has other information sheets in this series to support children and teens with learning difficulties and disabilities. To access, visit: psychology.org.au for more.